

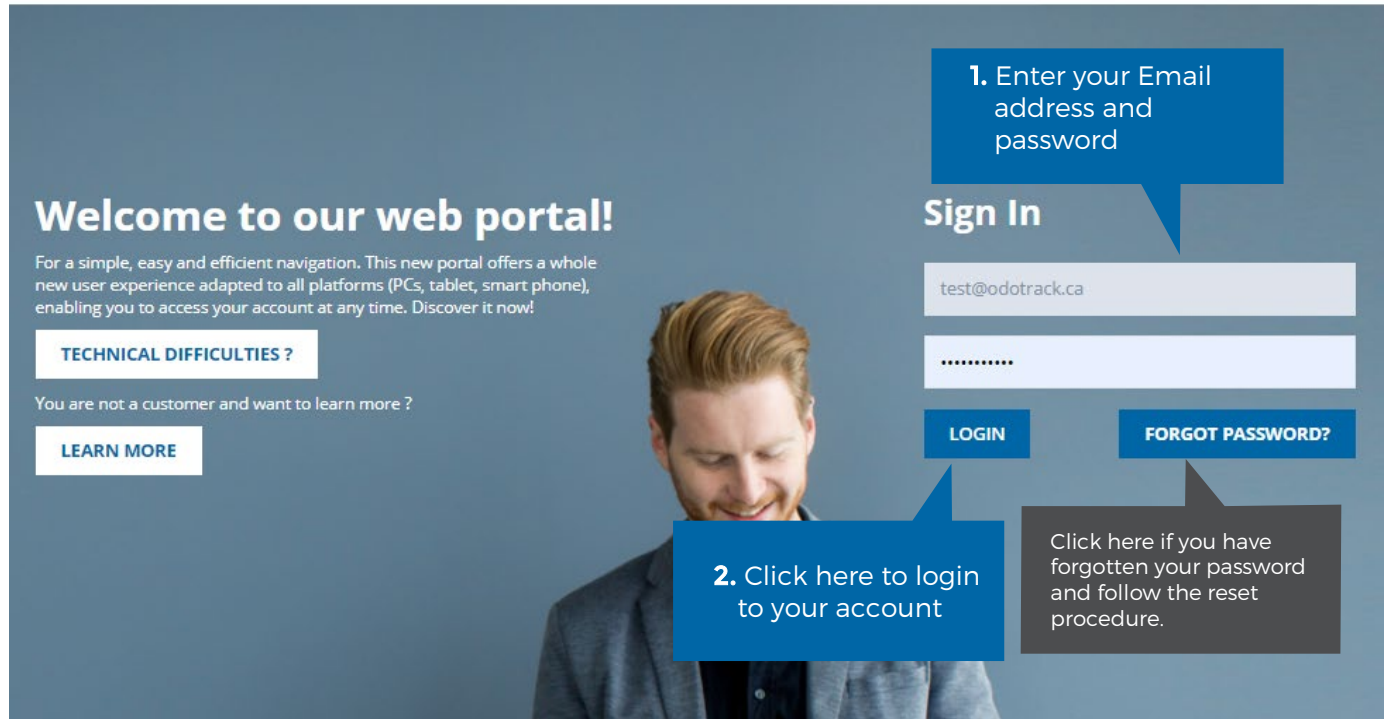
## CONNECTION

From the website [www.odotrack.com](http://www.odotrack.com), click on



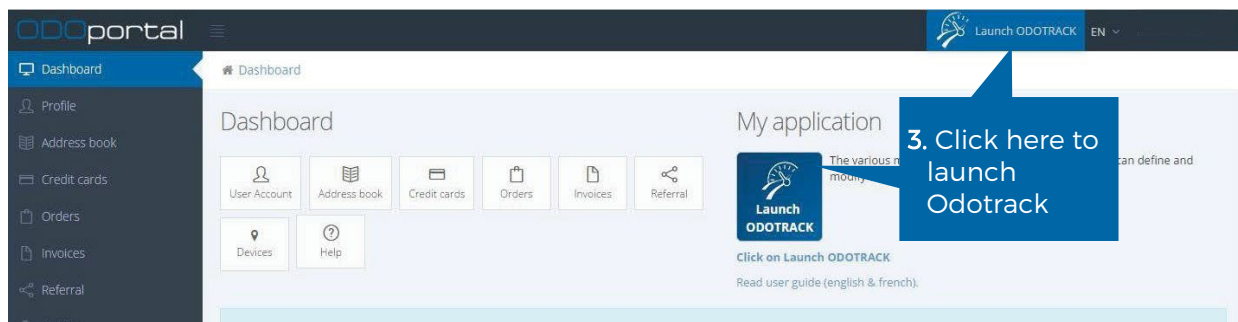
ODOportal

FRANÇAIS



## HOME PAGE OF THE ODOPORTAL OF YOUR ACCOUNT

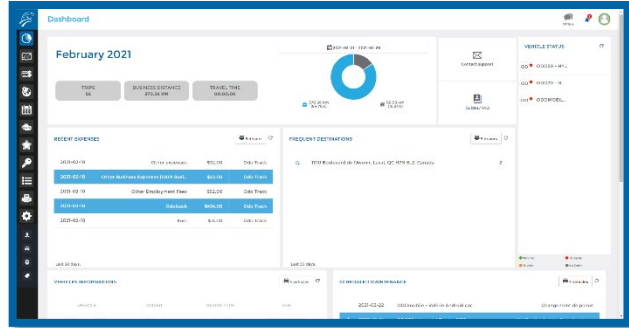
Once in your ODOportal, click on the **Launch ODOTRACK** button to access the ODOTRACK application.



DASHBOARD



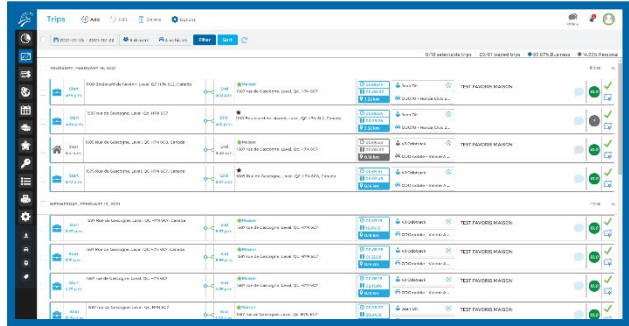
Home page of the ODOTRACK application to have an overview of the account.



TRIPS MODULE



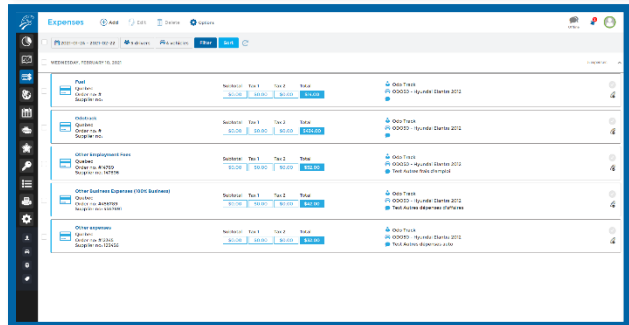
Consult and manage all your trips and favorites.



EXPENSES MODULE



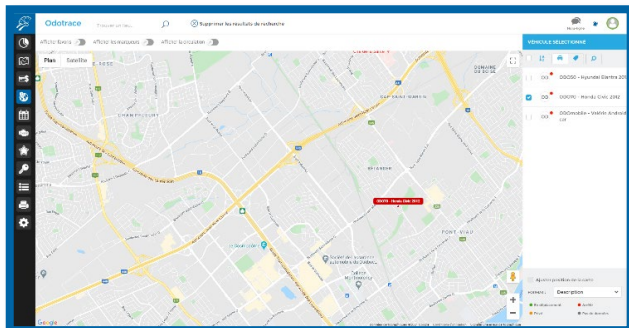
View, add and manage your automobile, business or employment expenses, with attachments.



ODOTRACE MODULE



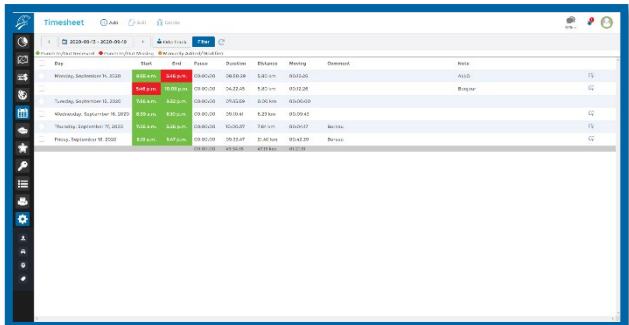
View your vehicles and trips in real-time.



TIMESHEET MODULE



Automatically generate and compile your geolocated timesheets.

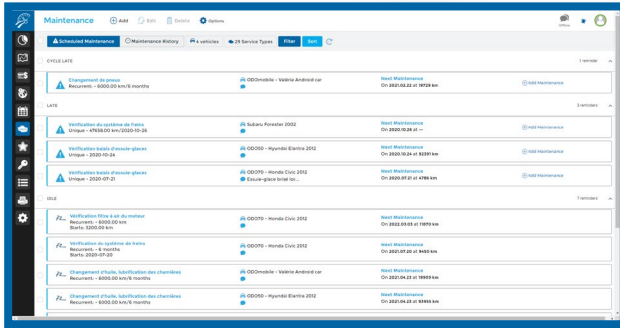


MAINTENANCE MODULE

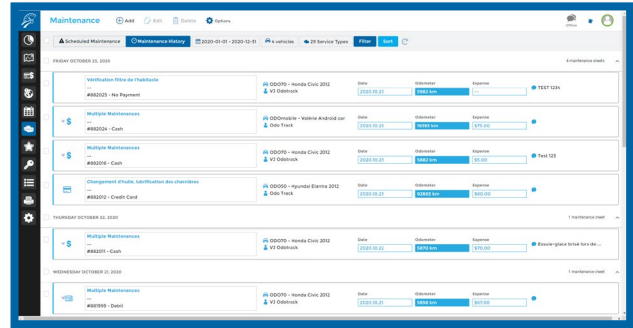


View and manage your scheduled maintenances and maintenance history.

Scheduled Maintenance



Maintenance History

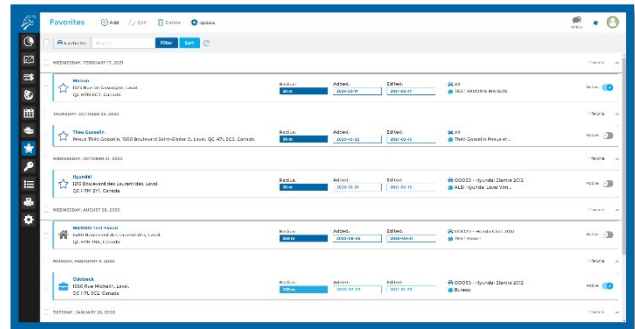


FAVORITES MODULE



View, manage and edit your favorites.

Automatic recognition of destination addresses and management of comments and related types of trips.

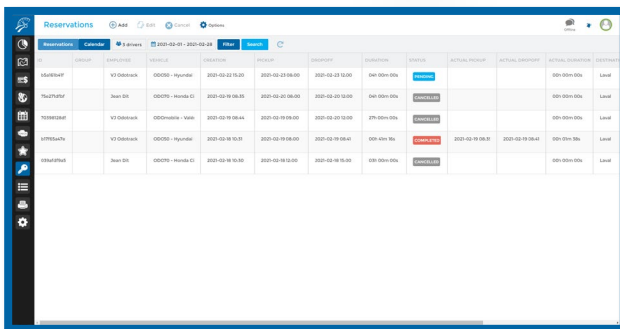


RESERVATIONS MODULE

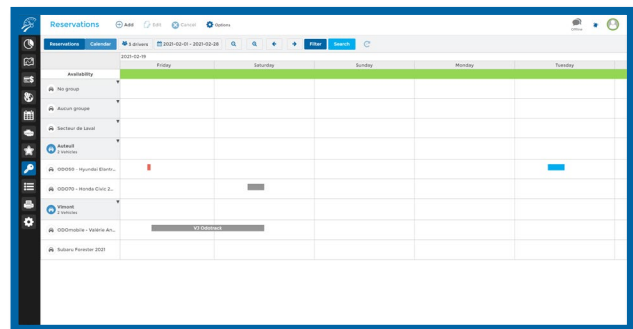


Reservation system for fleet vehicle users.

List of reservations



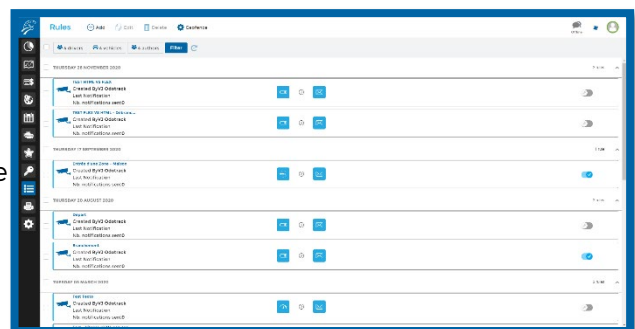
Calendar of reservations



RULES MODULE



Create personalized rules related to a driver, vehicle or device and receive notification when a specific behavior is detected (speeding, driving, disconnection, etc.).

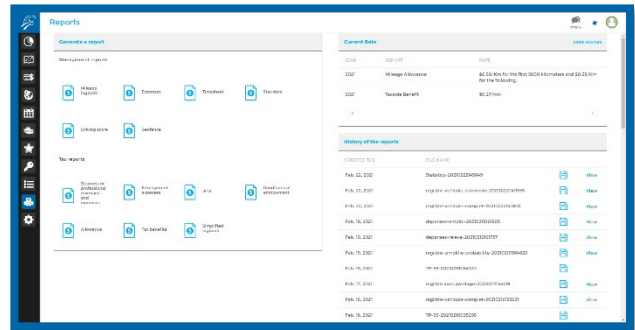


REPORTS MODULE



Consult, view, print and download your management reports (Mileage logbook, Expenses, Timesheet, Statistics, Driving score and Geofence) and tax reports (Business revenues, Employment expenses and conditions, IFTA, Allowance, Tax benefits and Simplified logbook).

Consult the current allowance and taxable benefit rates.

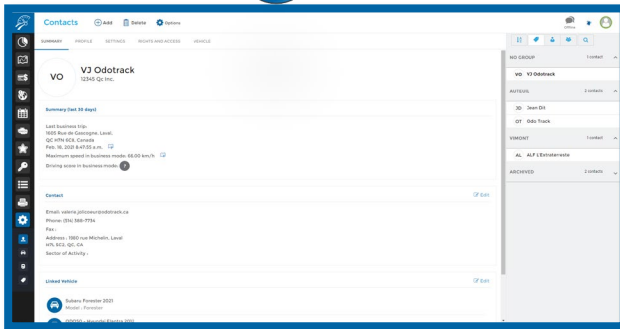


CONFIGURATION MODULE



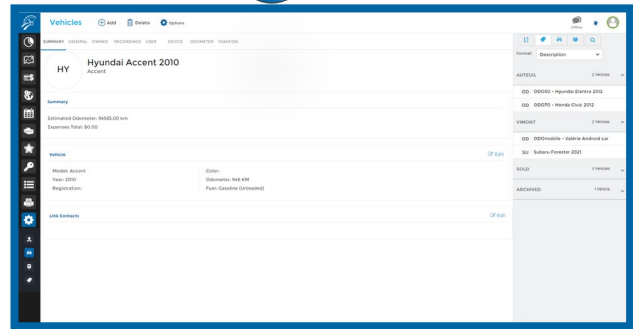
The Configuration Module includes 4 distinct sections: Contacts, Vehicles, Devices and Roles.

Contacts section



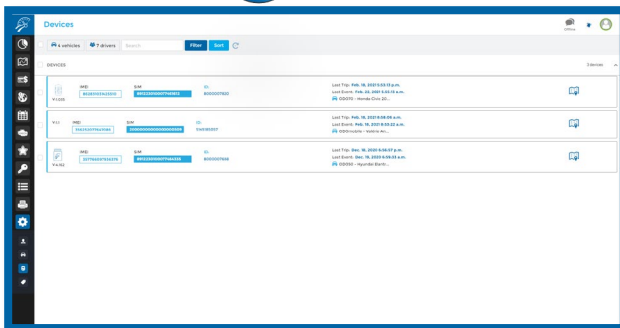
Personal information related to contacts.

Vehicles section



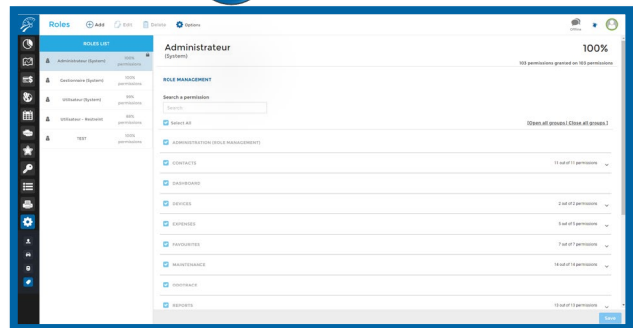
Information related to vehicles.

Devices section



Device information and configuration.

Roles section



Configuring the rights granted to users.