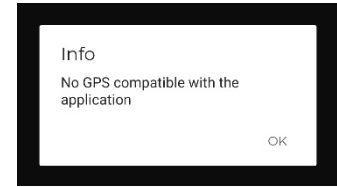


ERROR MESSAGE “NO GPS COMPATIBLE”

If you try to connect to the ODOhybrid application and get the error message **No GPS compatible with the application** it means that the user is not associated or linked with the vehicle as the current driver.

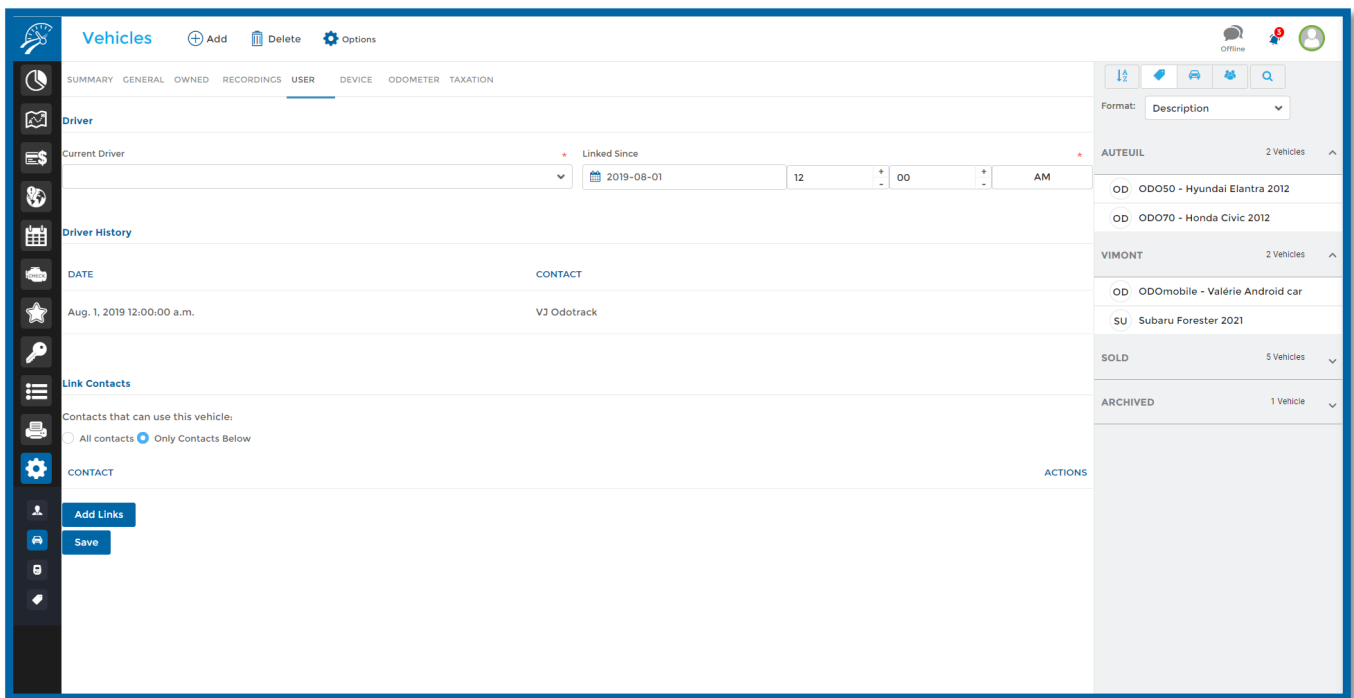
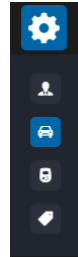


Here is what you need to do.

VEHICLE-CONTACT ASSOCIATION

Once connected to your ODOTRACK account, using the tabs on the left of the screen, access the **Configuration Module, Vehicles section**.

Click on the desired vehicle in the vehicle's list on the right of the screen, then go to the **User tab**.



Under the Driver heading, select the current driver of the vehicle using the drop-down menu, enter the date and time since when the user has been the driver of this vehicle and click on **Save** at the bottom of the page.

NOTE: The current driver's assignment date is important so that trips made since that date are assigned to the correct driver.

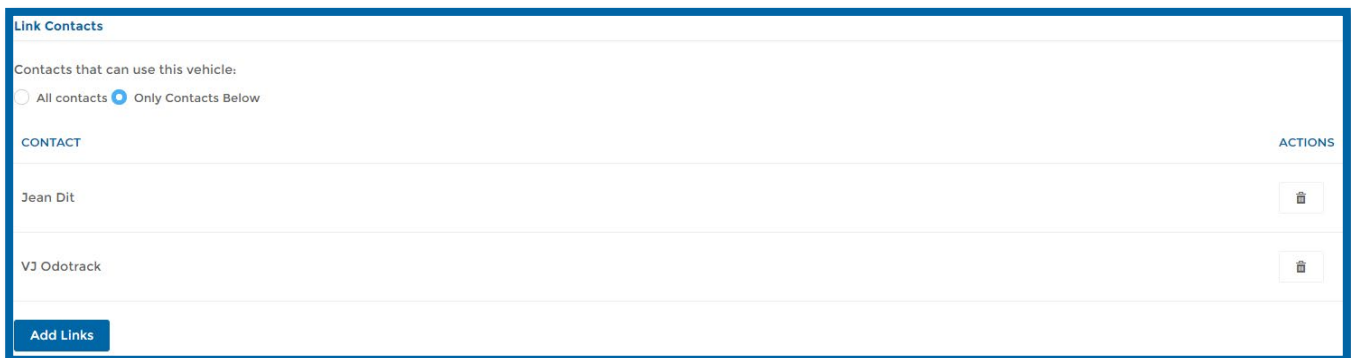
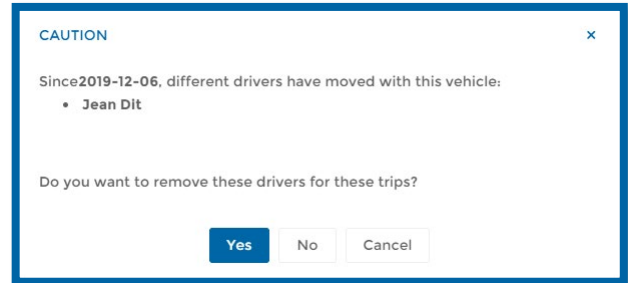
If more than one driver made trips with the selected vehicle, you will be prompted to determine if those drivers should be removed from those trips.

Click on the desired option.

To add/remove an association

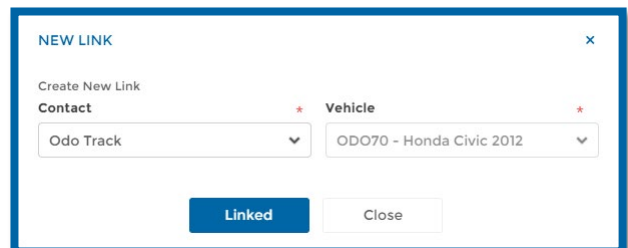
If the desired contact is not available in the list of current drivers, this means that this driver has not been previously associated with the chosen vehicle.

To add it, click on **Add Links** under the Link Contacts section at the bottom of the page.



Choose the contact to add and the vehicle you want to associate it with, then click on **Linked**.

You can then choose this contact as the current driver of the vehicle.



To remove an association, click on the trash icon to the right of the desired contact in the Link Contacts section.

NOTE: To remove the association of the current driver of the vehicle, you must first change the current driver and then proceed to remove the association with the former driver.

To consult the history of drivers

View the history of drivers associated with the chosen vehicle in the **Driver History** section.

